

Service Line Material Request



Date _____

Name _____

Contact # _____

Service Address _____

Submit using QR Code
or

Return by:

Email Dpw@eastbridgewaterma.gov

Drop off Department of Public Works

Mail 49 Dean Place EB, MA 02333

1. What is your Service Line Material?

- Copper**- is the color of a penny, green if corroded magnet does **NOT** stick
- Steel or Galvanized**- shade of gray, hard to scratch and **YES** magnet stick
- Lead** - Soft pipe, easy to scratch, magnet does **NOT** stick (request DPW verification).
- Plastic** PVC/ HDPE (black flex pipe was common in other homes not to be mistaken for lead)

Request assistance on _____ / _____ / _____ at _____ am or pm

2. What is the service pipe size? ¾” 1” 2” *QUARTER = 1” PENNY = ¾”*

Locate your Water Meter/ Service Line

The first step is to locate your water meter. Your service line is the pipe that comes directly through the concrete foundation (*not to be mistaken for the plumbing used throughout your home*).



Plastic/ HDPE (black flex pipe is most common)



Determining what kind of metal

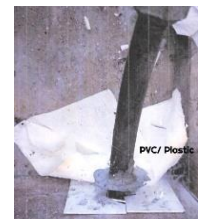
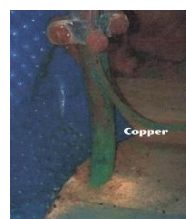


You may need something to **scratch** a pipe, like a key or coin and a magnet (any magnet will work). To test your pipes. These tools will be used to determine if your metal pipes are made from **galvanized steel, copper, or lead**.

Copper- is the color of a penny, **magnet** does **NOT** stick (green if corroded)

Steel or galvanized- is some shade of gray, scratch that section of pipe, hard to scratch and **YES magnet** sticks.

Lead- Soft metal, hard to scratch and **magnet** does **NOT** stick (not to be mistaken for black plastic(HDPE) flex pipe).



East Bridgewater Water Department
49 Dean Place,
East Bridgewater, MA 02333



Dear Resident,

The East Bridgewater Water Department is required by the U.S. Environmental Protection Agency's (EPA) to develop a service materials inventory of all water service lines per the Lead and Copper Rule. Service Lines are the pipes that connect the water mains in the street with the pipes in your home. This information will help in our efforts to identify the lead service lines and reduce exposure to lead pipes and continue offering safe drinking water to the community.

Your water service line is **UNKNOWN**

Please help assist the DPW by following the quick steps below to identify the material of your water service line. If you have any trouble, please do not hesitate to contact the DPW for assistance.

Step 1:

The first step is to locate and identify the material of your water service line. Please refer to the reverse side (e.g., **Locate your Water Meter & Determine what kind of metal**).

Step 2: Submit a response.

Option A- Scan QR Code and submit the response electronically.



1. Open your camera app.
2. Point the camera at the QR code.
3. Make sure the QR code is centered on your smartphone's screen.
4. *Do not take picture* just wait for camera to focus on the QR Code
5. Click on the link.

OR

Option B- On the Reverse Side. Check the “box that applies” submit by

1. Taking a picture of the response and emailing it to Dpw@eastbridgewaterma.gov,
2. Mailing it to DPW 49 Dean Place East Bridgewater, MA 02333
3. Drop it off to the DPW 49 Dean Place East Bridgewater, MA 02333

We look forward to your participation in this program. If you would like someone from our water department to come out and identify the material for you, please call 508-378-1620 or email us at dpw@eastbridgewaterma.gov